



BIOMÉRIEUX

# SAMPLES. PATHOGENS. DECISIONS.

## CULTURE OF CONFIDENCE

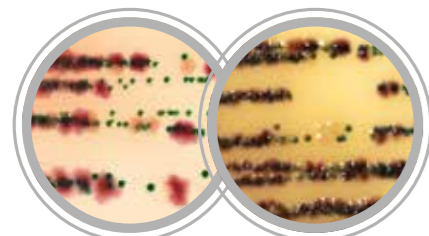


PIONEERING DIAGNOSTICS

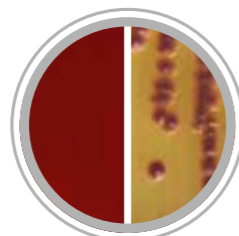
# LEADING THE CHARGE

## On the pathogens with medical value

### URINARY TRACT INFECTION MANAGEMENT

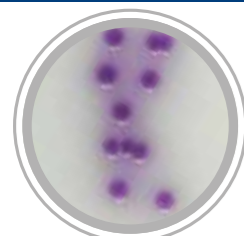


**CHROMID® CPS® Elite**  
Isolation, enumeration and direct or presumptive identification of urinary tract infection organisms. Validated for reading as of 16 hours.



**CHROMID® CPS® Elite/Columbia CNA + 5% sheep blood**  
Isolation, enumeration and direct or presumptive identification of urinary tract infection organisms. Selective isolation of fastidious bacteria. Determination of hemolysis.

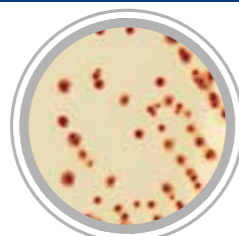
### GASTROINTESTINAL INFECTION MANAGEMENT



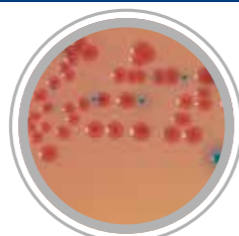
**CHROMID® Salmonella Elite**  
Selective isolation and identification of *Salmonella* species. Growth of *Salmonella* including *S. arizonae* & *S. Typhi*.



**CHROMID® C. difficile**  
Detection and identification of *Clostridioides difficile*. Higher sensitivity: includes taurocholate for spore germination.

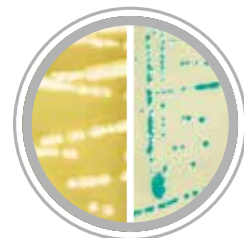


**CASA™**  
Selective medium for the detection of *Campylobacter*.



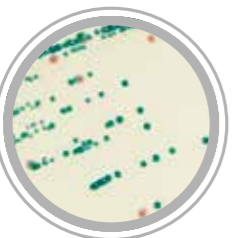
**CHROMID® Vibrio**  
Selective isolation of *Vibrio* and presumptive identification of *V. cholerae* and *V. parahaemolyticus* in 24 hours.

### CANDIDOSE AND FUNGI INFECTION MANAGEMENT



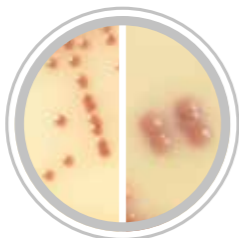
**CHROMID® Candida / SGC2\***  
Selective isolation of yeasts and molds and identification of *Candida albicans* in only 24h, growth of *C. auris* and *C. krusei*.

\* Sabouraud Gentamicin Chloramphenicol 2

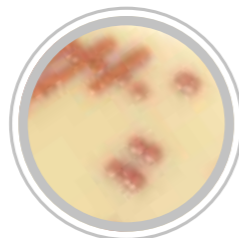


**CHROMID® Candida**  
Selective isolation of yeasts. Direct identification of *C. albicans* in only 24 hours. Growth of *C. auris* and *C. krusei*.

### S. AUREUS INFECTION MANAGEMENT

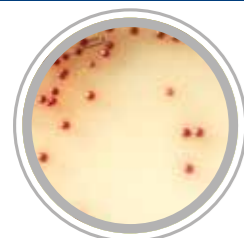


**CHROMID® SMART MRSA / S. aureus**  
Combining *S. aureus* identification with direct detection of Methicillin resistance in 18-24 hours on nasal swabs, throat, perineum, wound, groin and positive blood culture specimens.

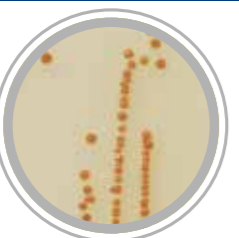


**CHROMID® S. aureus Elite**  
Selective isolation and direct identification of *Staphylococcus aureus*. Medium enriched with thymidine for detection of *S. aureus* including Small Variant Colonies.

### PREVENTION OF NEONATAL INFECTION

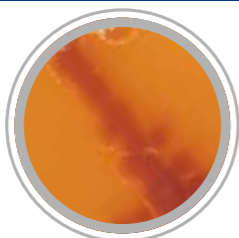


**CHROMID® Strepto B**  
Screening of Group B *Streptococci* in pregnant women: highly sensitive detection of Group B *Streptococci*, including non-hemolytic strains.



**Granada™**  
Screening and identification of Group B *Streptococci* in pregnant women. Rapid solution to optimize your workflow.

### MONITORING OF PULMONARY DISEASES



**CHROMID® P. aeruginosa**  
Direct identification of *Pseudomonas aeruginosa*. Validated for monitoring cystic fibrosis respiratory samples.

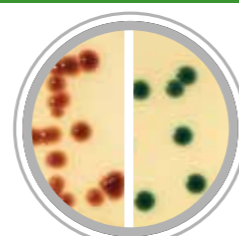


**NTM Elite**  
Selective agar plate for isolation of colonies of Non-Tuberculous *Mycobacteria* (NTM) from respiratory specimens including Cystic Fibrosis patient samples.

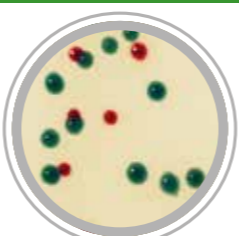
# LEADING THE CHARGE

## On multi-drug resistant organisms

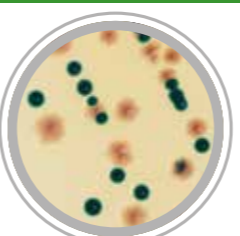
### SCREENING RESISTANCE IN GRAM NEGATIVE BACTERIA



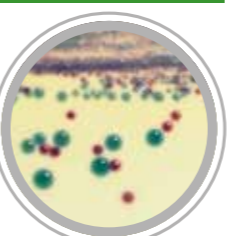
**CHROMID® CARBA SMART**  
Screening of ALL carbapenemase producing *Enterobacterales* in 18-24 hours on clinical specimens - stools or rectal swabs.



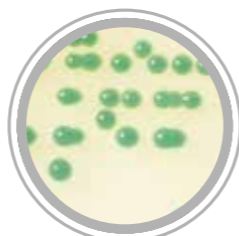
**CHROMID® CARBA**  
Screening of carbapenemase producing *Enterobacterales* in 18-24 hours on clinical specimens - stools or rectal swabs.



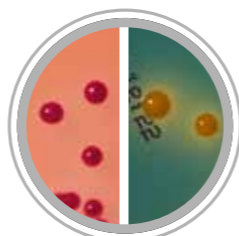
**CHROMID® OXA-48**  
Screening of carbapenemase OXA-48 producing *Enterobacterales* in 18-24 hours on clinical strains and stools.



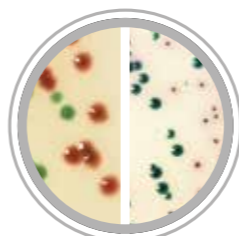
**CHROMID® Colistin R**  
Screening of *Enterobacterales* with colistin resistance in 18-24 hours on clinical and veterinary samples.



**CHROMID® ESBL**  
Screening of ESBL producing *Enterobacterales* in 18-24 hours on clinical specimens - rectal swabs, urines and respiratory specimens.

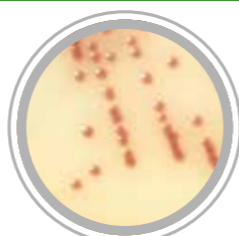


**BLSE**  
Selective medium for the screening of presumptive ESBL *Enterobacterales* and Multi-Resistant Gram negative bacilli, on stools, rectal swabs, urine and respiratory secretions.

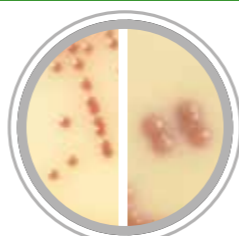


**CHROMID® ESBL / CHROMID® VRE**  
Combining ESBL and VRE identification in one shot from one single specimen.

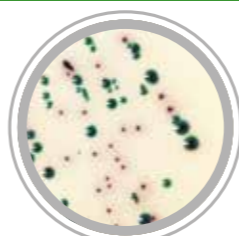
### SCREENING RESISTANCE IN GRAM POSITIVE BACTERIA



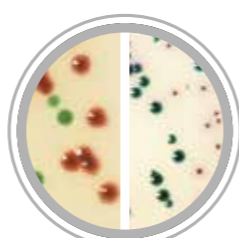
**CHROMID® MRSA SMART**  
Screening of Methicillin-resistant *Staphylococcus aureus* in 18-24 hours on nasal swabs, throat, perineum, wound, groin and positive blood culture specimens.



**CHROMID® SMART MRSA / S. aureus**  
Combining *S. aureus* identification with direct detection of Methicillin resistance in 18-24 hours on nasal swabs, throat, perineum, wound, groin and positive blood culture specimens.



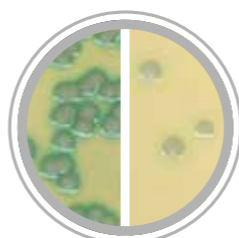
**CHROMID® VRE**  
Screening of VRE with characteristic coloration of *Enterococcus faecalis* and *Enterococcus faecium* in 24 hours on stools and rectal swab specimens.



**CHROMID® ESBL / CHROMID® VRE**  
Combining ESBL and VRE identification in one shot from one single specimen.



**CHROMID® MRSA**  
Screening of Methicillin-resistant *Staphylococcus aureus* in 18-24 hours on nasal swabs, throat, perineum, wound, groin and positive blood culture specimens.



**CHROMID® MRSA / CHROMID® S. aureus**  
Screening of Methicillin-resistant *Staphylococcus aureus* (MRSA) and selective isolation of *Staphylococci* and the direct identification of *S. aureus*.

For more information consult the instructions for use. Contact your local bioMérieux representative for availability.

# LEADING THE CHARGE

## On the pathogens with medical value

### URINARY TRACT INFECTION MANAGEMENT

CHROMID® CPS® Elite Translucent	ref. 418284	20 plates
CHROMID® CPS® Elite Translucent	ref. 416172	100 plates
CHROMID® CPS® Elite Opaque	ref. 418206	20 plates
CHROMID® CPS® Elite Opaque	ref. 416173	100 plates
CHROMID® CPS® Elite / Columbia CNA + 5% sheep blood	ref. 418229	20 biplates

### GASTROINTESTINAL INFECTION MANAGEMENT

CHROMID® Salmonella Elite	ref. 412108	20 plates
CHROMID® Salmonella / Hektoen	ref. 43465	20 biplates
CHROMID® Vibrio	ref. 43762	20 plates
CASA™	ref. AEB520270	20 plates
CHROMID® C. difficile	ref. 43871	20 plates

### CANDIDOSE AND FUNGI INFECTION MANAGEMENT

CHROMID® Candida	ref. 43631	20 plates
CHROMID® Candida	ref. 43639	100 plates
CHROMID® Candida / Sabouraud Gentamicin Chloramphenicol 2	ref. 43464	20 biplates

### S. AUREUS INFECTION MANAGEMENT

CHROMID® S.aureus Elite	ref. 419042	20 plates
CHROMID® SMART MRSA / S.aureus	ref. 419398	20 biplates

### PREVENTION OF NEONATAL INFECTION

Granada™	ref. 43712	20 plates
CHROMID® Strepto B	ref. 43461	20 plates

### MONITORING OF PULMONARY DISEASES

CHROMID® P.aeruginosa	ref. 43462	20 plates
CHROMID® S.aureus Elite	ref. 419042	20 plates
NTM Elite agar	ref. 423144	20 plates

### ESwab® FOR SPECIMEN COLLECTION

ESwab®	ref. 490CE.A	50 units
FecalSwab™	ref. 470CE.A	50 units

### VITEK® 2, VITEK® 2 COMPACT, VITEK® MS, ETEST® STRIPS, RAPIDEC® CARBA NP

Compatibility proven

## On multi-drug resistant organisms

### CULTURE MEDIA DESIGNED FOR MRSA SCREENING

CHROMID® MRSA SMART	ref. 413050	20 plates
CHROMID® MRSA SMART	ref. 413051	100 plates
CHROMID® SMART MRSA / S.aureus	ref. 419398	20 biplates
CHROMID® MRSA	ref. 43451	20 plates
CHROMID® MRSA	ref. 43459	100 plates
CHROMID® MRSA / CHROMID® S.aureus	ref. 43466	20 biplates

### CULTURE MEDIA DESIGNED FOR CPE\*\* SCREENING

CHROMID® CARBA SMART	ref. 414685	20 biplates
CHROMID® CARBA	ref. 43861	20 plates
CHROMID® OXA 48	ref. 414011	20 plates

### CULTURE MEDIA DESIGNED FOR ADDITIONAL MDRO\*\*\* SCREENING

CHROMID® Colistin R	ref. 421170	20 plates
CHROMID® VRE	ref. 43004	20 plates
CHROMID® ESBL / CHROMID® VRE	ref. 43470	20 biplates
CHROMID® ESBL	ref. 43481	20 plates
BLSE agar	ref. AEB525770	20 biplates

\*\* CPE: Carbapenemase Producing *Enterobacterales*  
\*\*\* MDRO: Multi Drug Resistant Organism





# “Selection of Publications” available

Contact your local bioMérieux representative to find out more about available literature

**DIAGNOSING NONTUBERCULOUS MYCOBACTERIAL INFECTIONS**  
Selection of publications  
2020 EDITION

PIONEERING DIAGNOSTICS

**CARBAPENEM AND COLISTIN RESISTANCE: SCREENING AND CONFIRMATION**  
Selection of publications  
2019 EDITION

PIONEERING DIAGNOSTICS



# BIOMÉRIEUX SOLUTIONS FOR ANTIMICROBIAL STEWARDSHIP

**CARBAPENEM RESISTANCE**  
From diagnosis to outbreak management

PIONEERING DIAGNOSTICS

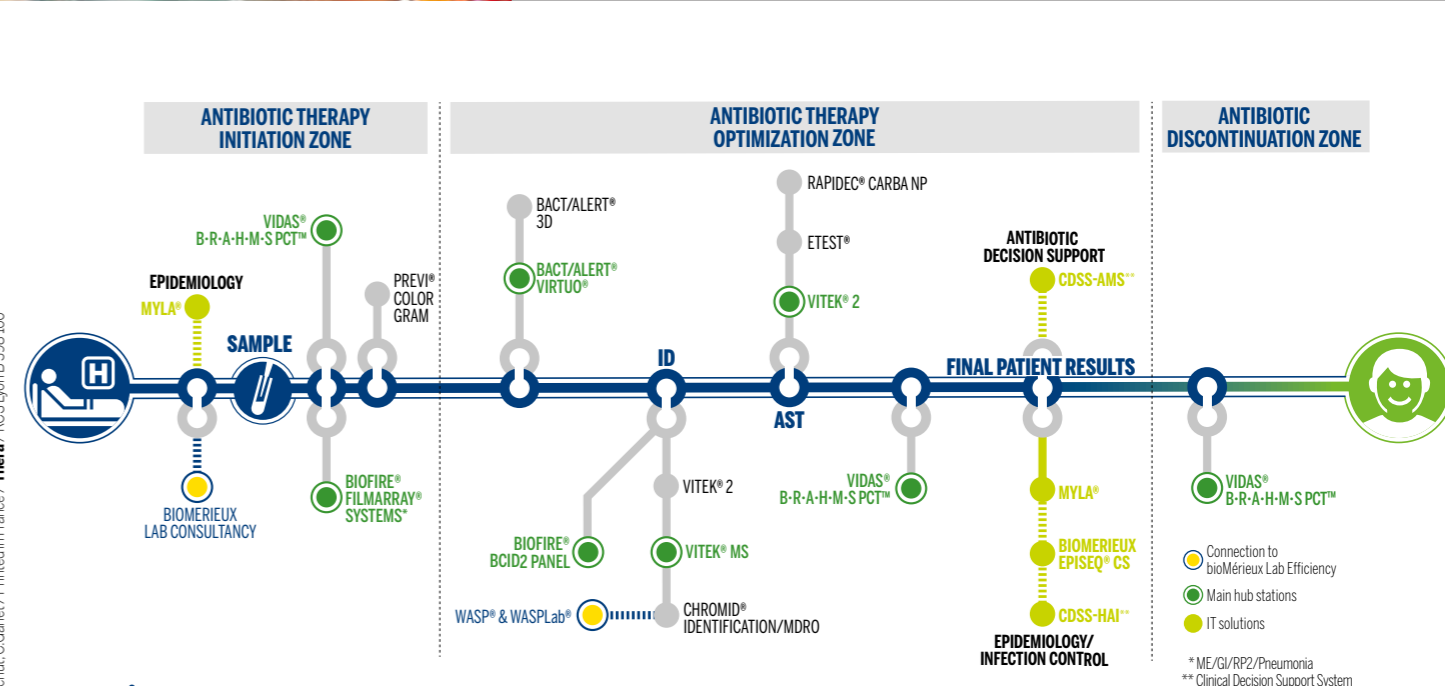
**CLOSTRIDIODES DIFFICILE INFECTIONS**  
From Diagnosis to Outbreak Management

PIONEERING DIAGNOSTICS

**ANTIMICROBIAL STEWARDSHIP**  
A practical guide to implementation in hospitals  
2019 EDITION

PIONEERING DIAGNOSTICS

10-20 / 9319982-002-GB/A / Document and/or pictures not legally binding. Modifications by bioMérieux can be made without prior notice. / bioMérieux, the bioMérieux logo, BACT/ALERT, BIOFIRE, CASA, CHROMID, CPS, EPISQ, ETEST, FILMARRAY, MYLA, PREVI, RAPIDEC, VIDAS, VIRTUO and VITEK are used, pending and/or registered trademarks belonging to bioMérieux, or one of its subsidiaries, or one of its companies. / B-R-A-H-M-S PCT™ is the property of Thermo Fisher Scientific Inc. and its subsidiaries. / ESwab, FecalSwab, WASP and WASPLab are trademarks belonging to Copan Italia S.p.A. / MEDIO GRANADA is a trademark belonging to Manuel De la Rosa Fraile. / Any other name or trademark is the property of its respective owner. / bioMérieux S.A. RCS Lyon 673 620 399 / Photos bioMérieux, N. Bouchut, C.Garnet / Printed in France. / Thera / RCS Lyon B 398 160



Download booklets at [biomerieux-diagnostics.com/clinician-booklets](http://biomerieux-diagnostics.com/clinician-booklets) or ask your bioMérieux representative.